

# 44-2600 Series

## Regulators - Pressure Reducing

D44261794X012

### Specifications

For other materials or modifications, please consult TESCOM.

#### OPERATING PARAMETERS

Pressure rating per criteria of ANSI/ASME B31.3

**Maximum Inlet Pressure**

400 or 3500 psig / 27.6 or 241 bar

**Outlet Pressure Ranges**

0-12, 0-25, 0-50, 0-100, 0-150,  
0-250 psig (400 psig inlet models only)  
0-0.83, 0-1.7, 0-3.4, 0-6.9, 0-10.3,  
0-17.2 bar (27.6 bar inlet models only)

**Design Proof Pressure**

150% of maximum rated

**Leakage**

**Internal:** Bubble-tight

**External:** Design to meet  $\leq 2 \times 10^{-8}$  atm cc/sec He

**Operating Temperature**

-40°F to 165°F / -40°C to 74°C

**Flow Capacity**

**3500 psig / 241 bar Inlet:**  $C_v = 0.06$

**400 psig / 27.6 bar Inlet:**  $C_v = 0.15$

#### MEDIA CONTACT MATERIALS

**Body**

316 Stainless Steel

**Bonnet**

303 Stainless Steel

**Diaphragm**

316 Stainless Steel

**Seat**

Teflon®

**Friction Sleeve (inner)**

Teflon®

**Remaining Parts**

316 Stainless Steel

#### OTHER

**Cleaning**

CGA 4.1 AND ASTM G93

**Weight**

3 lbs / 1.4 kg

Teflon® is a registered trademark of E.I. du Pont de Nemours and Company.



TESCOM 44-2600 Series is a compact, extremely sensitive, high purity single-stage regulator for specialty, flammable and industrial gases with flows of less than 10 SCFM / 283 SLPM. Diffusion-resistant metal diaphragm seal ensures gas purity and integrity.

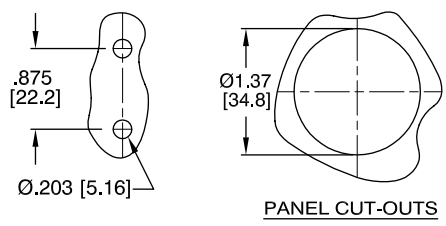
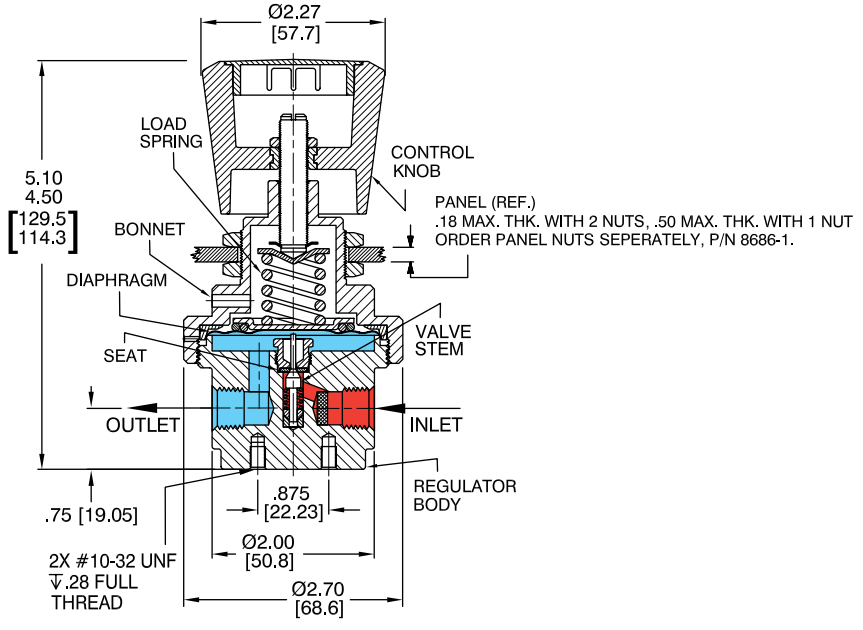
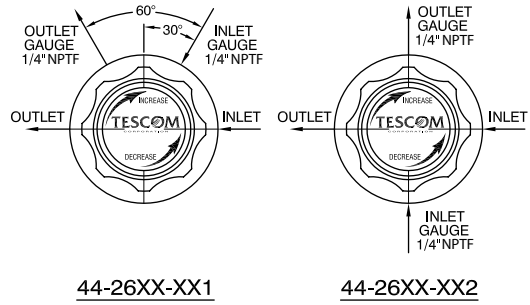
### Applications

- Gas/Analyzer sampling systems
- Fuel cells
- Tissue and cell culture incubators
- Chromatograph flame detector fuel supply
- Excellent for low outlet and low differential pressure applications

### Features and Benefits

- Features a large convoluted diaphragm for extreme sensitivity with minimum droop
- Repeatability:  $\pm 0.5\%$  of outlet pressure range
- Metal-to-metal diaphragm to body seal
- Accuracy:  $\pm 1\%$  of outlet pressure range
- Gauge ports are standard
- Dome loaded version is available
- $C_v = 0.02$  and  $C_v = 0.24$  models are available
- NACE compliant designs are available

44-2600 Series Regulator Drawing



All dimensions are reference & nominal  
Metric [millimeter] equivalents are in brackets

### 44-2600 Series Regulator Flow Charts

For more information on how to read flow curves, please refer to the Flow Curves and Calculations document (debul2007x012) in the TESCOM catalog or on [www.tescom.com](http://www.tescom.com).

